

CLOSING THE GAP

UBC ENTERPRISE SYSTEMS DISASTER RECOVERY

PROJECT OVERVIEW FOR BCNET / APRIL 2019

SALIM JANMOHAMED – PROGRAM MANAGEMENT OFFICE / UBC IT
ANDY TAM – MANAGING PARTNER / SENTRY PARTNERS INC.



The Problem

The Challenges

The Approach

The Lessons

Going Forward

The Problem

The Challenges

The Approach

The Lessons

Going Forward

SITUATION

- Large, complex, and distributed multi-platform system, database, and application environments; voluntary & involuntary federations
- Some centralized and standardized resilience / availability solutions in place such as onsite / offsite data replications, backups, clusters
- Lacked practical, integrated, coordinated, and timely recovery solution for Vancouver campus data center disaster scenario

The Problem

The Challenges

The Approach

The Lessons

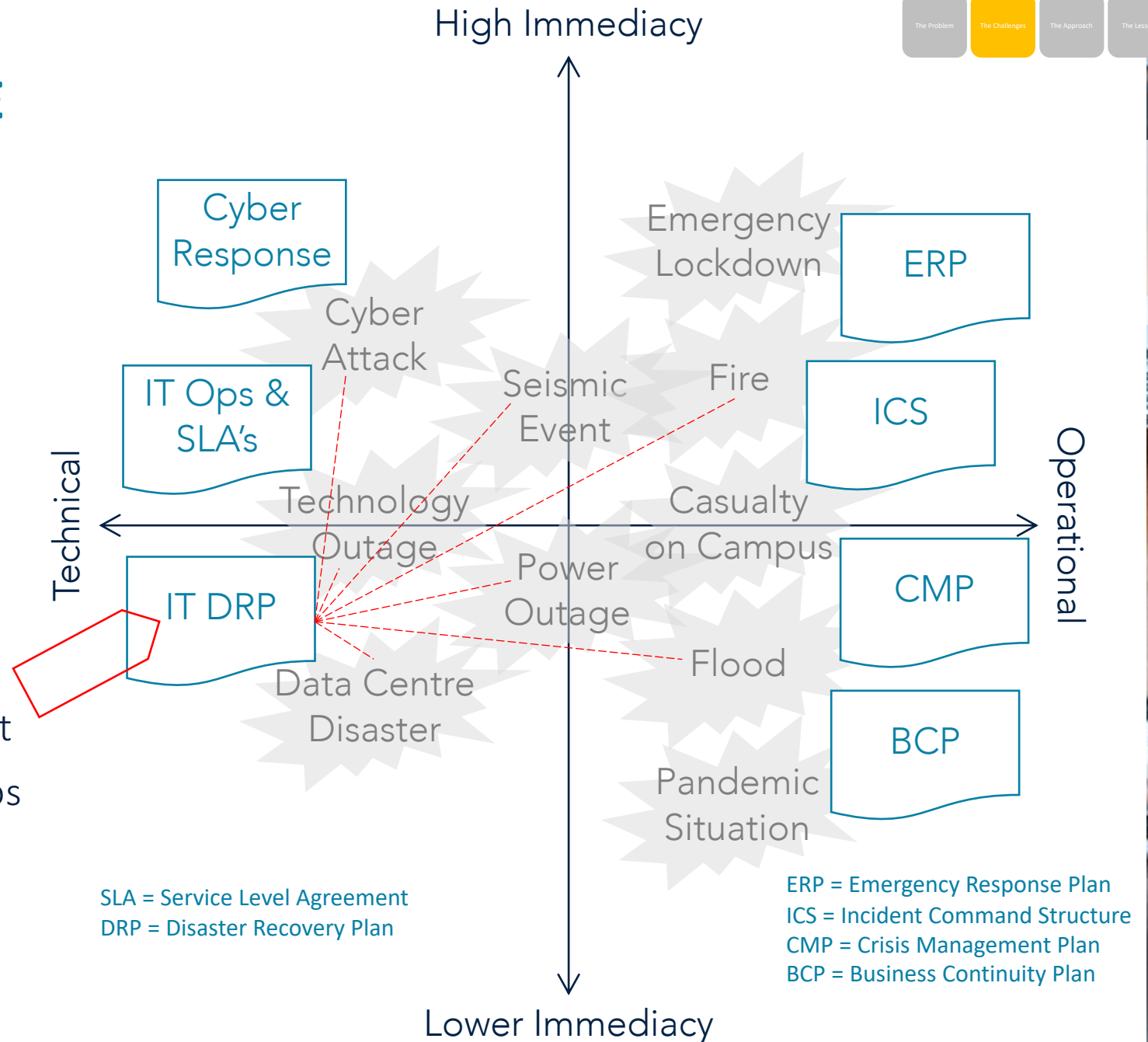
Going Forward

CHALLENGES

- Initiative business prioritization within University IT portfolio
- Alignment of business, operational, and technical resilience needs
- Conflating and conflicting technological requirements and priorities
- “Strategic paralysis”
- “Scope paralysis”

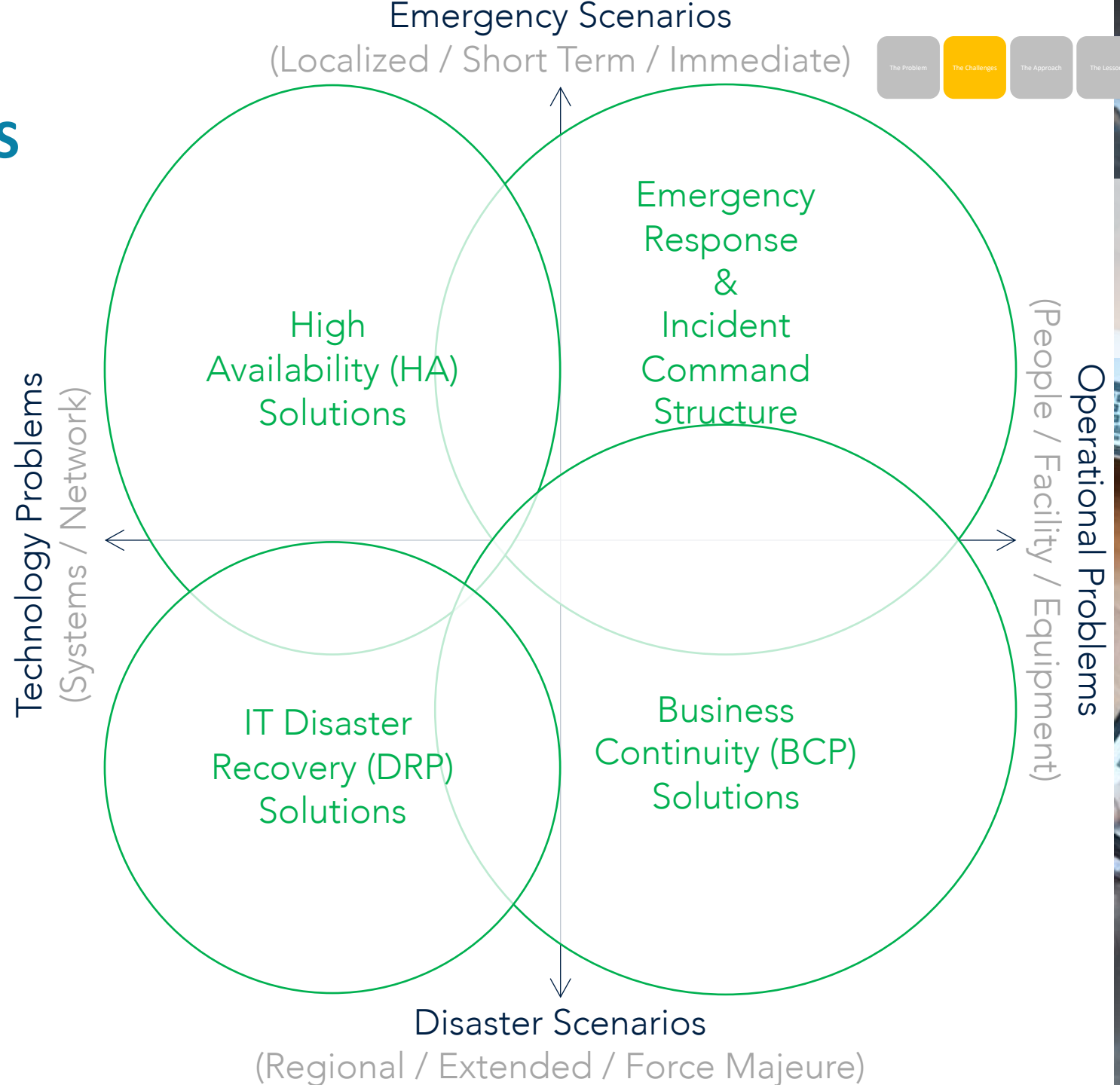
RESILIENCE LANDSCAPE

- The institution needs to be prepared for a multitude of emergency and risk scenarios
- IT DRP is an integral part of the overall University resilience planning landscape
- IT DRP addresses a specific subset of technology disruption scenarios



SOLUTION ALIGNMENTS

- The institution has different requirements for High Availability (HA), Business Continuity (BCP), and IT Disaster Recovery (DRP) solutions
- Focus of this project is IT Disaster Recovery



The Problem

The Challenges

The Approach

The Lessons

Going Forward

GOVERNANCE PATH



STAKEHOLDERS ENGAGEMENT – BUSINESS IMPACT ASSESSMENT

Application Data Loss **High Impact** Threshold

VP Areas	SIS	LMS	FASmail	HR	Finance	Treasury	Pensions	Research Admin Systems	Research Operational Systems	Research Facilities & Equipment
All Areas - UBC Combined	< 1 hour	< 1 hour	< 1 hour	< 1 day	< 1 hour	< 1 hour	< 1 week	< 1 hour	< 5 mins	< 1 hour
DVC & VP UBCO	< 1 hour	< 1 hour	< 1 hour	< 1 day	< 1 hour	< 1 hour	< 1 week	< 1 hour	< 5 mins	< 1 hour

Application Unavailability **High Impact** Threshold

VP Areas	SIS	LMS	FASmail	HR	Finance	Treasury	Pensions	Research Admin Systems	Research Operational Systems	Research Facilities & Equipment
All Areas - UBC Combined	< 1 hour	< 1 hour	< 1 hour	< 1 day	< 1 hour	< 1 day	< 1 week	< 1 hour	< 1 hour	< 1 hour
DVC & VP UBCO	< 1 hour	< 1 hour	< 1 hour	< 1 day	< 1 hour	< 1 day	< 1 week	< 1 hour	< 1 hour	< 1 hour

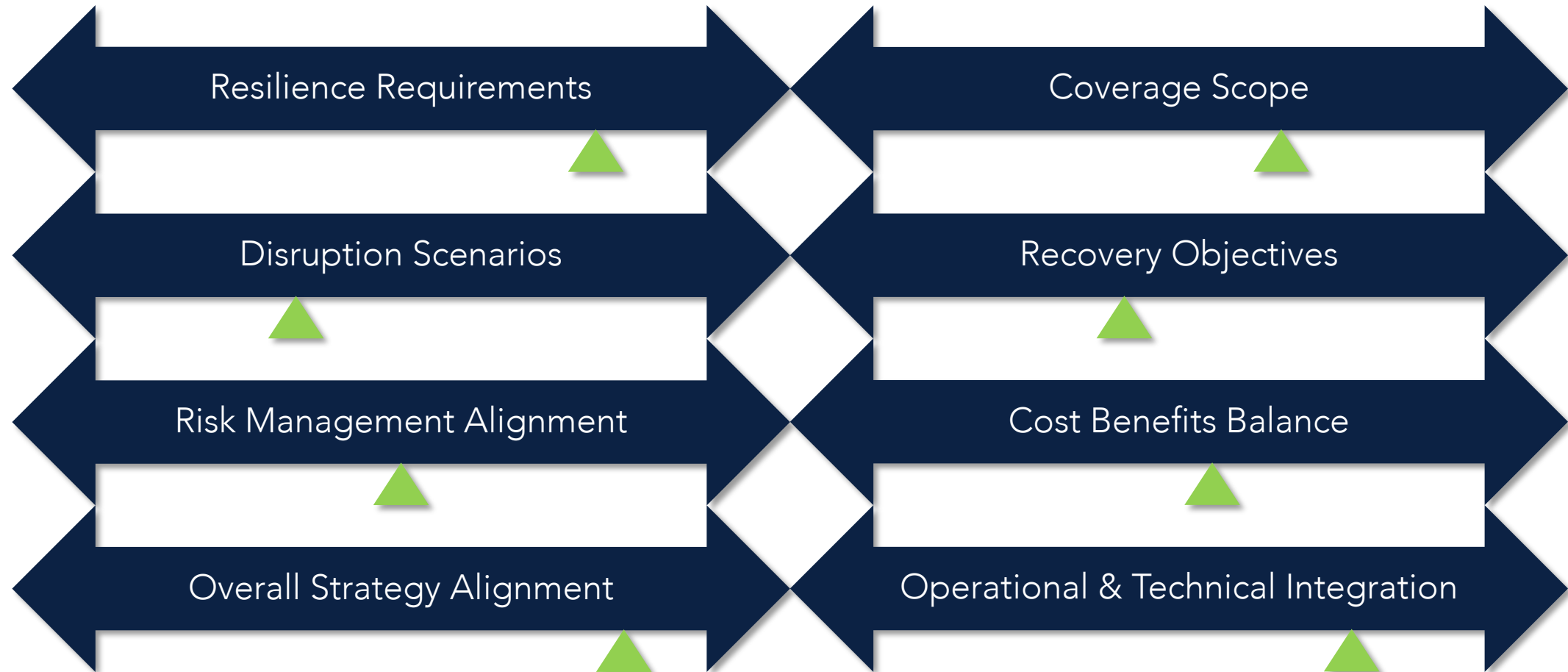
Process to Institution Priorities **High Impact** Threshold

VP Areas	1. Safety & Security	2. Operations, Environment & Properties	3. Teaching	4. Research	5. Compliance, Legal, & Financial
All Areas - UBC Combined	< 5 mins	< 5 mins	< 1 hour	< 1 hour	< 5 mins
DVC & VP UBCO	< 5 mins	< 5 mins	< 1 hour	< 1 hour	< 5 mins
VP Development & Alumni	>= 1 week	>= 1 week	>= 1 week	>= 1 week	< 1 week
VP External Relations	< 1 hour	< 1 week	>= 1 week	>= 1 week	< 1 day
Provost & VP Academic	< 1 day	< 1 hour	< 1 hour	< 1 day	< 1 hour
VP Finance & Operations	< 5 mins	< 5 mins	< 1 hour	< 1 hour	< 5 mins
VP Research & Innovation	< 1 day	< 1 day	< 1 day	< 1 hour	< 1 hour
VP Students	< 5 mins	< 1 hour	>= 1 week	>= 1 week	< 5 mins
VP Human Resources	< 1 day	>= 1 week	< 1 week	< 1 week	< 1 week



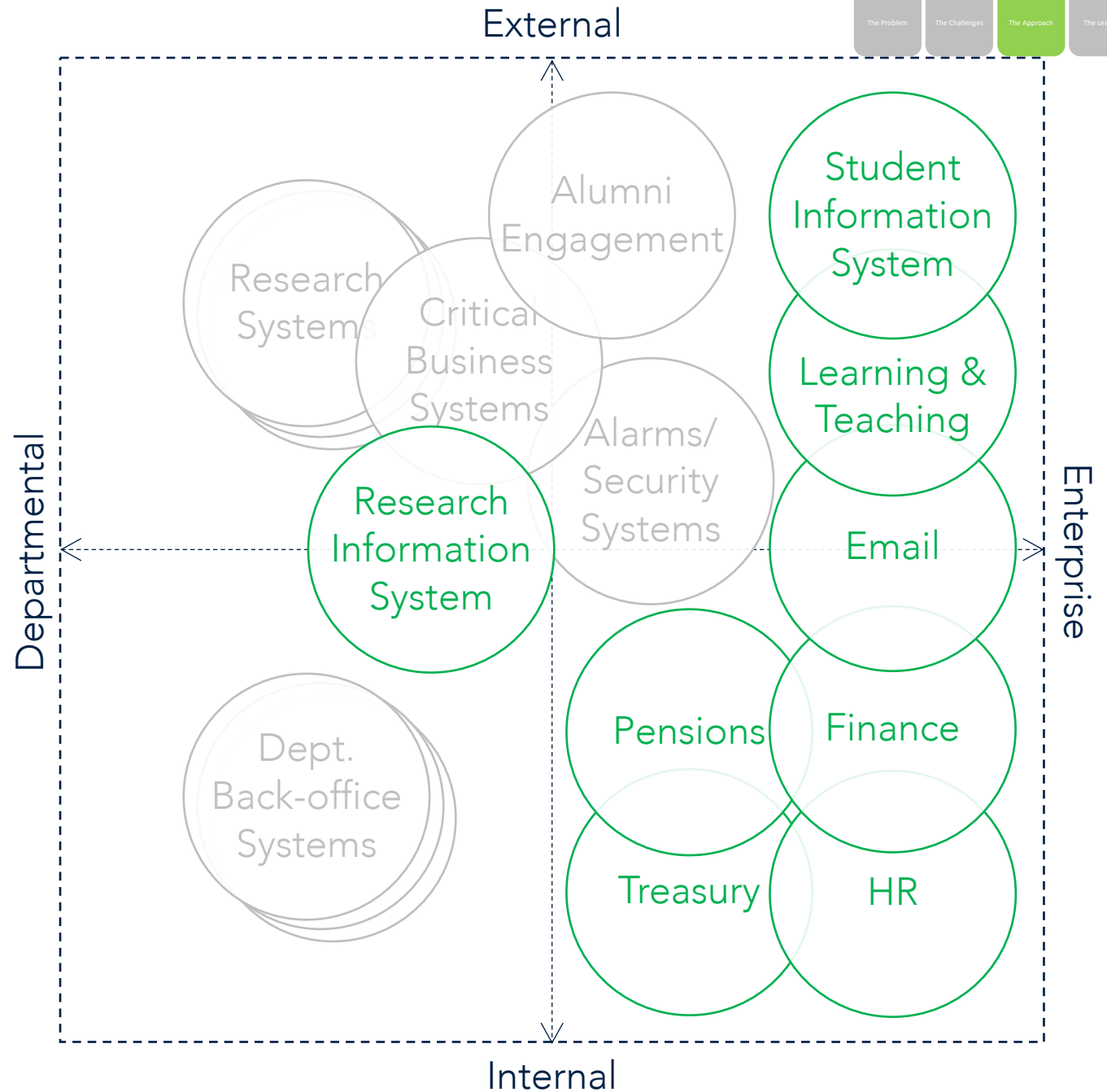
STRATEGY / SCOPE ALIGNMENTS

- The cost / risk / benefits balance of the IT DR solution is driven by the final decisions vector



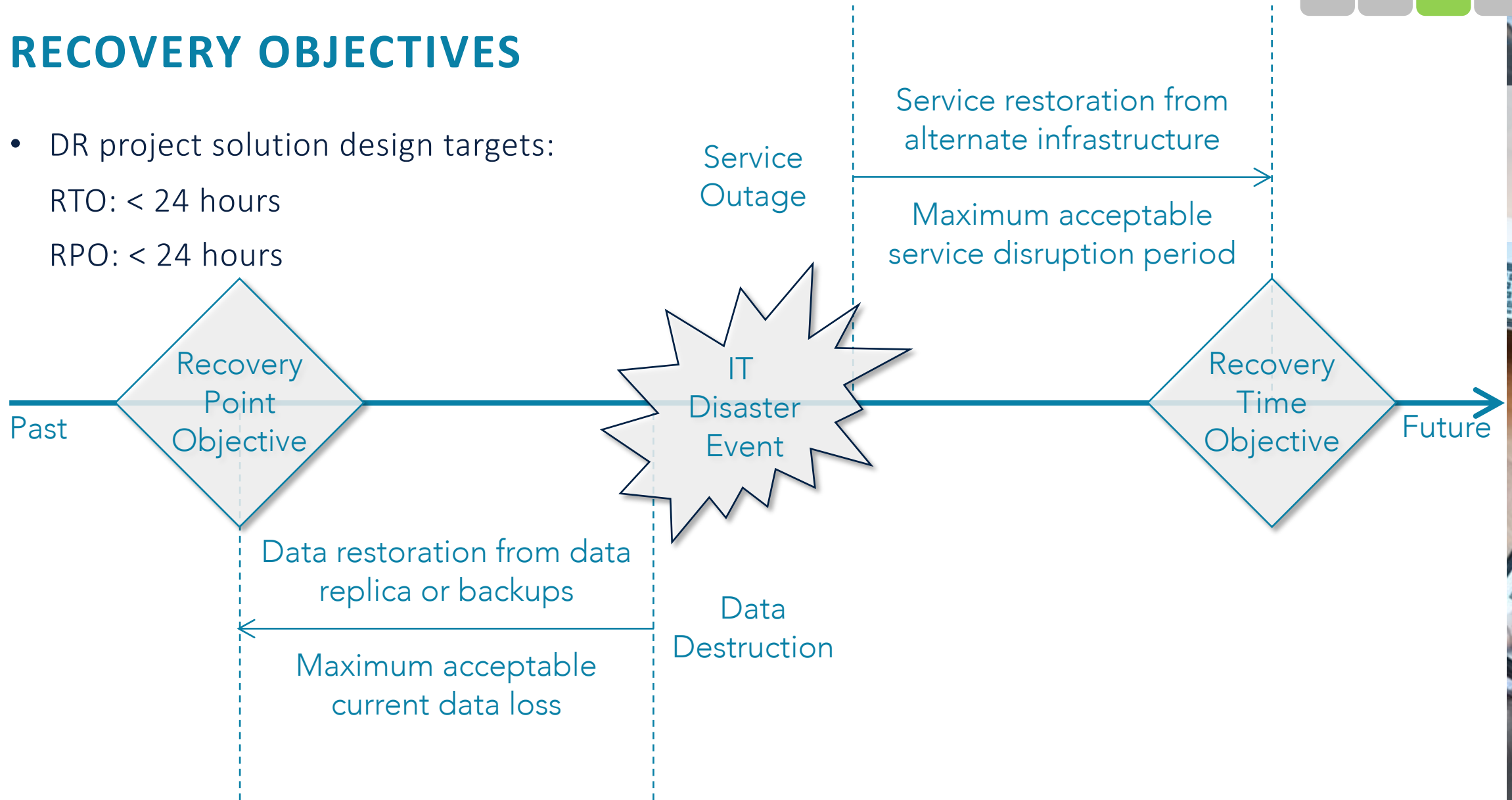
SYSTEMS SCOPE

- Focus for DR project was on enterprise-wide, legacy, on-premise, non-realtime, systems



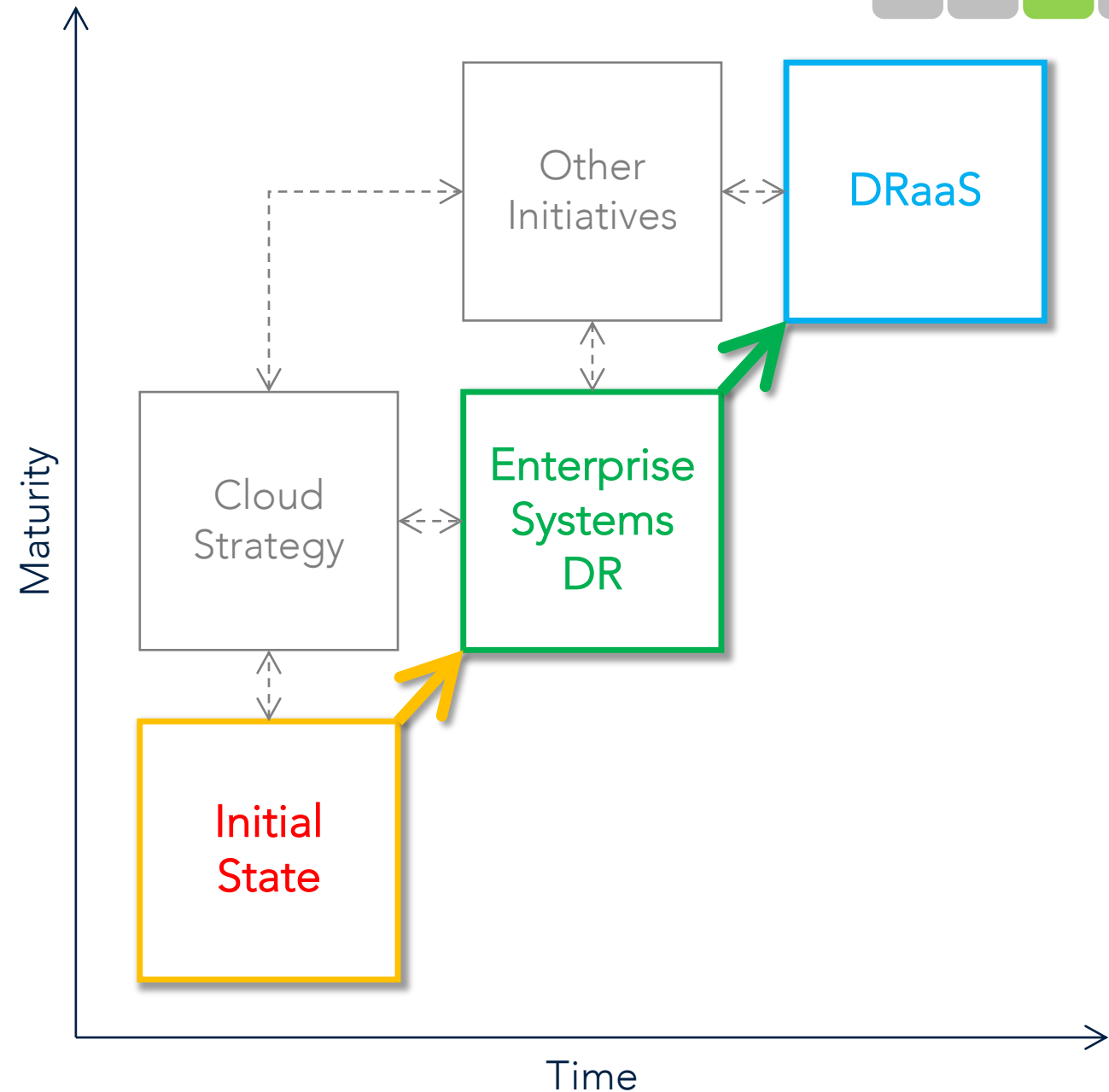
RECOVERY OBJECTIVES

- DR project solution design targets:
RTO: < 24 hours
RPO: < 24 hours

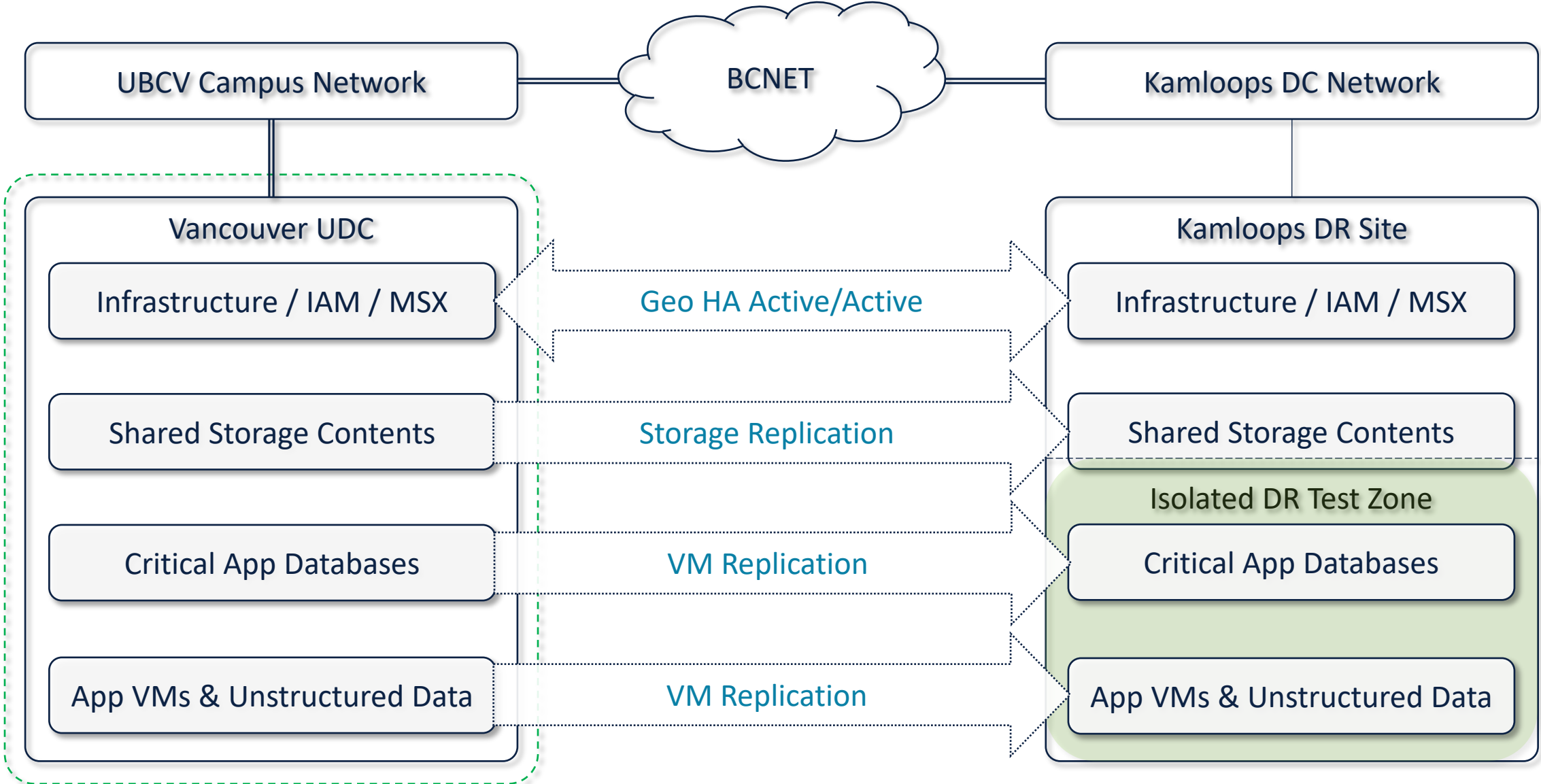


PROGRAM APPROACH

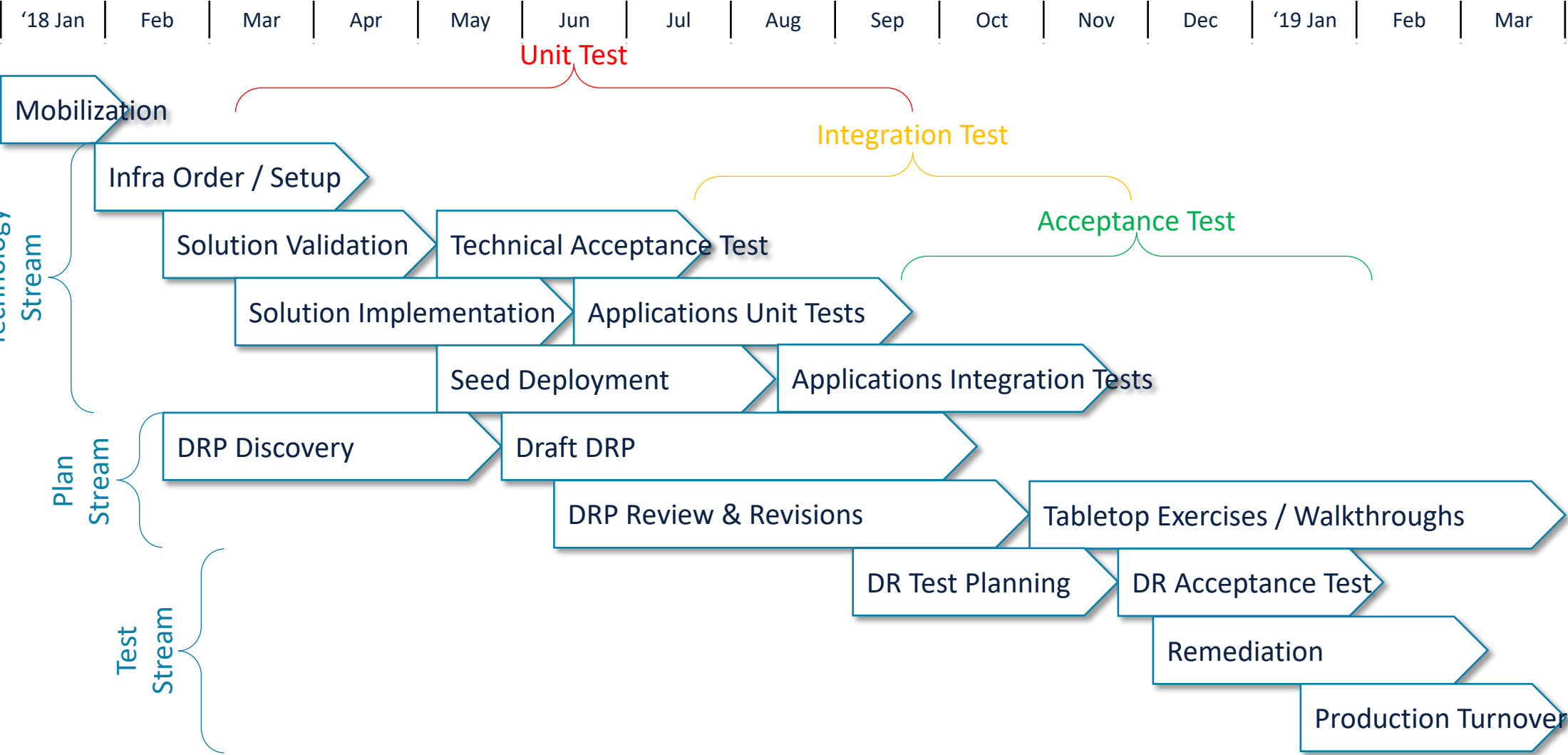
1. Establish enterprise systems DR first
2. Then address balance of on-premise UBC environments via DR as a Service approach
3. Balance and align between on-premise and cloud migration strategies execution & timing



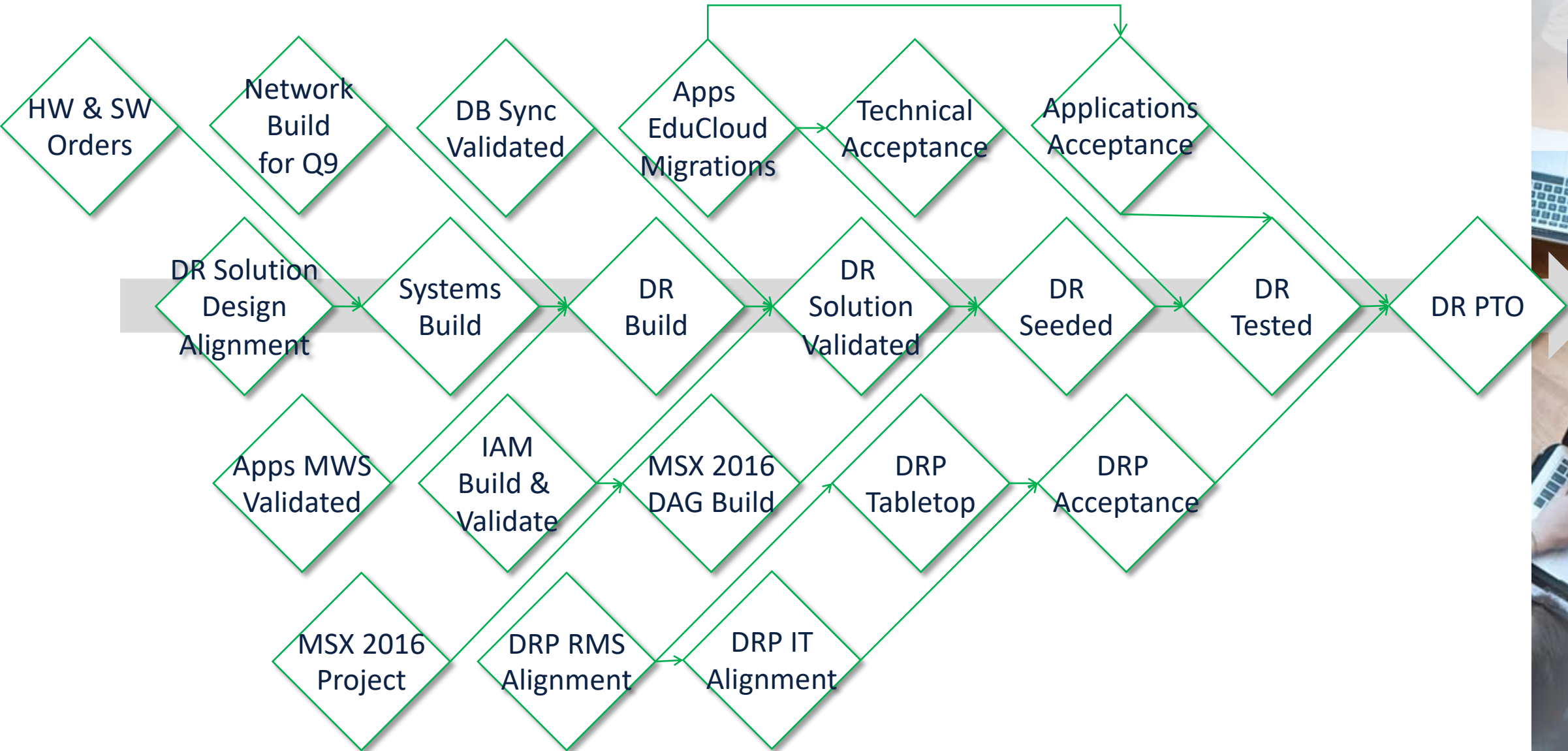
TECHNICAL APPROACH



PROJECT WATERFALL



PROJECT CRITICAL PATH / WEEKLY SPRINT CADENCE



PARALLEL IMPLEMENTATION STREAMS

1. Enact parallel implementation streams for in scope applications
2. Dependent on underlying DR infrastructure being functional
3. Project benefits outweigh the higher project delivery overhead
4. Requires a highly committed and engaged core project implementation team

Application Streams	Minimum Working Set	DR Test Planning	EduCloud Migration	Unit Testing	Integration Testing	Acceptance Testing
	Define list of application servers in scope for DR	Create DR test plans for application	Migration of in scope servers to EduCloud	Jumpbox setup & testing, and initial DR shakedowns	Conduct integration testing for application DR	Conduct DR test for application and document results
IAM	●	●	●	●	●	○
SIS	●	●	●	●	●	○
LTE / CTLT	●	●	●	●	●	○
LTE / LMS Kaltura	●	●	●	●	●	○
HR / Finance	●	●	●	○	○	○
IR	●	●	●	●	●	○
Hyperion	●	●	●	●	○	○
RiSE	●	●	●	●	●	○
Pensions	●	●	●	●	●	○
Treasury	●	●	●	●	●	○
CFI Equipment DB	●	●	●	●	●	○
SharePoint	●	●	●	●	●	○
FASmail	●	●	●	○	○	○

The Problem

The Challenges

The Approach

The Lessons

Going Forward

LESSONS

Succinct & Specific Mandate	BIA / Engagements	Scope / Objectives Alignment	UBC IT Stakeholders Engagement	Scope Conflation Management & Drift Control
Iterative Solution Architecture Alignment	DR Testing Solution Architecture	Scrum / Agile Sprint Cadence	Enable Parallel Application DR Streams	Solution Heterogeneity / Flexibility
Technical Surprises	Operational Surprises	DR Operational Readiness Half-life	Did we mention scope conflation & drift?	Project Management Hygiene

The Problem

The Challenges

The Approach

The Lessons

Going Forward

GOING FORWARD

DR
Coordination &
Plan
Management

DR Program &
Enrolment
Management

CAB / ITSM
Integrations &
Operations

Ongoing
Testing &
Exercises

Integration &
Alignment with
Other
Initiatives



THANK YOU!

Questions?

salim.janmohamed@ubc.ca

andy.tam@sentrypartners.com



THE UNIVERSITY OF BRITISH COLUMBIA

